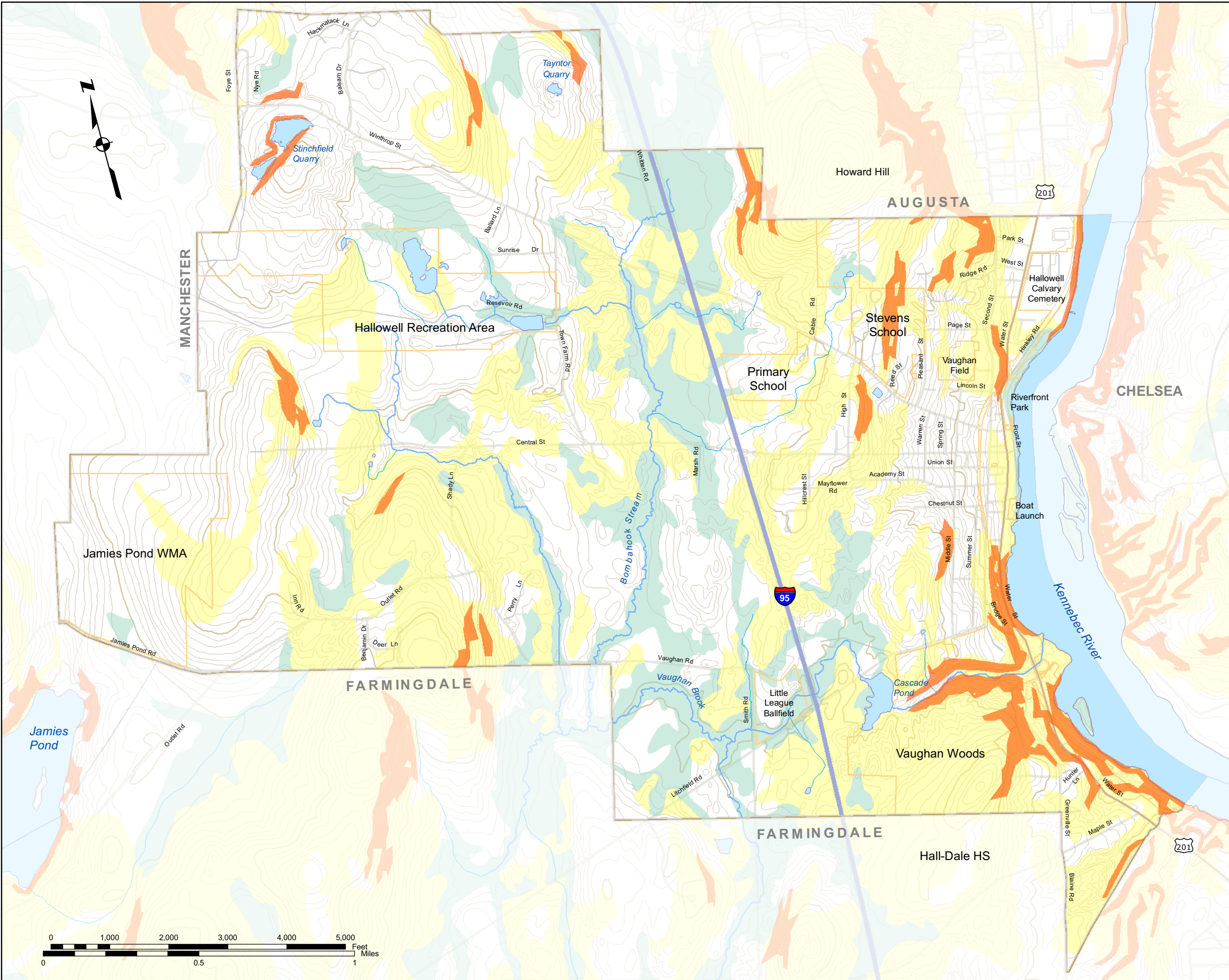


# Hydric Soils, Erodible Soils and Steep Slopes



**LEGEND**

- █ Slopes > 20%
- █ Hydric soils
- █ Highly erodible soils
- 10 foot contours
- 100 foot contours

Steep slopes shown are for areas of two or more contiguous acres with sustained slopes of 20% or greater

Slope values generated from USGS National Elevation Data.

Hydric and Erodible soils from USDA Natural Resource Conservation Service data.

Contours from USGS 1:24,000 scale topographic maps.

